

### MULTIPLE CYLINDER MANIFOLDS

#### Application

Used with suitable pigtails to connect multiple cylinders together. Ideal for loads that require more than one cylinder to be in service at a time.

#### Features:

- Provides a three-way tee function without an internal disc check

#### Ordering Information

Part Number	Inlet Connections	Outlet Connection
1300E	1/2"	1/2"
1400E	1/2"	1/2"

Materials
Steel



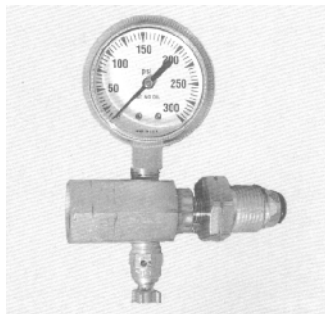
### SUPPRESSORS

Suppressor assemblies can be an extremely important accessory in ensuring proper operation of some standard vent second stage regulators when installed in a building and the bonnet vent is piped outside. Frequently the "impedance" of the vent piping will induce a pulsation in the regulated pressure causing the appliance flame to alternately grow and shrink.

The Series 1493 suppressor assemblies attached to the vent or vent piping prevents this pulsation, and in addition, when properly installed, protects against the accumulation of snow and ice on the vent opening. It is equipped with a screen to exclude insects.

#### Ordering Information

Part Number	Application
1493	Propane and LP Gas vent piping
1493B	LP Gas vent piping

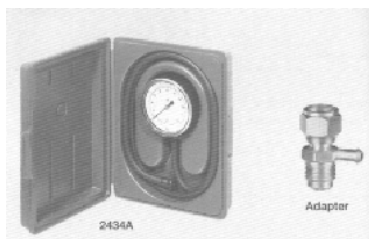


### HIGH PRESSURE GAUGE ADAPTER

Designed for testing high pressure lines. Adapter has 0 to 300 PSIG gauge. A bleeder valve allows you to bleed down to connect pressure during pressure tests.

#### Ordering Information

Part Number	Inlet Connection	Outlet Connection	Pressure Gauge Range (PSIG)
582	1/2"	1/2"	0 to 300



### LOW PRESSURE TEST SET

The kit provides the equipment necessary for checking regulator delivery pressure (low pressure) at the appliances. The basic set contains a 2424A-2 low pressure gauge and a 3 foot - 3/16" O.D. flexible synthetic rubber tube. Adapters are also available.

#### Ordering Information

Part Number	Quantity	Adapter
2424A	1	140
		1400
		1400

